



desert conservation  
PROGRAM  
respect, protect and enjoy our desert!

# Amending the Clark County Multiple Species Habitat Conservation Plan

August 10, 2010

John Tennert



desert conservation  
PROGRAM  
respect, protect and enjoy our desert!

## Presentation Overview

- Clark County MSHCP
- Permit Amendment Overview
- Advisory Committee
- Conservation Strategy
- Project Milestones



- MSHCP Overview
  - 30-year permit effective February 2001
  - Take cannot exceed 145,000 acres
  - Permittees collect a \$550 per acre disturbance fee
  - MSHCP achieves conservation by augmenting existing funding/conservation on federal lands
  - Fund habitat restoration and enhancement, public information, research and monitoring and other similar conservation actions



- Permit Amendment Purpose
  - Address acreage cap
  - Re-evaluate the list of covered species to refocus attention on those species most at risk and most directly impacted by take
  - Re-evaluate covered activities and overall conservation/mitigation strategy
  - Re-evaluate structure and implementation of the permit and plan





## Stakeholder Groups

- Environmental (2)
- Developer/Homebuilder (2)
- Education (2)
- Gaming (1)
- Off-Highway Vehicle (1)
- Banking/Finance (1)
- Nevada Taxpayers Association (1)
- Business/Small Business (2)
- Rural community (1)
- Senior (1)
- Tribal representative (1)
- Union (1)
- Southern Nevada residents (5)



- CAC has recommended amending the plan to include:
  - 215,000 acres
  - 21 species
- CAC expressed support for a revised conservation strategy

Common Name	Scientific Name	Current Federal Status	Current State Status
<b>Birds</b>			
Arizona bell's vireo	<i>Vireo bellii</i>		Protected
Bendire's thrasher	<i>Toxostoma bendirei</i>		Protected
LeConte's thrasher	<i>Toxostoma lecontei</i>		Protected
Phainopepla	<i>Phainopepla nitens</i>		Protected
Southwestern willow flycatcher	<i>Empidonax traillii extimus</i>	Endangered	Endangered
Western burrowing owl	<i>Athene cucularia hypugea</i>		Protected
Yellow-billed cuckoo	<i>Coccyzus americanus</i>	Candidate	Sensitive
Yuma clapper rail	<i>Rallus longirostrus yumanensis</i>	Endangered	Endangered
<b>Amphibians</b>			
Relict leopard frog	<i>Rana onca</i>	Candidate	Protected
<b>Mammals</b>			
Desert kangaroo rat	<i>Dipodomys deserti</i>		
Desert pocket mouse	<i>Chaetodipus penicillatus sobrinus</i>		
Spotted bat	<i>Euderma maculatum</i>		Threatened
Townsend's big-eared bat	<i>Corynorhinus townsendii pallescens</i>		Sensitive
<b>Reptiles</b>			
Desert tortoise	<i>Gopherus agassizii</i>	Threatened	Threatened
Banded Gila monster	<i>Heloderma suspectum cinctum</i>		Protected
<b>Vascular Plants</b>			
Forked (Pahrump Valley) buckwheat	<i>Eriogonum bifurcatum</i>		
Las Vegas bearpoppy	<i>Arctomecon californica</i>		Critically Endangered
Las Vegas Valley buckwheat	<i>Eriogonum corymbosum</i> var. <i>nilesii</i>	Candidate	
Sticky buckwheat	<i>Eriogonum viscidulum</i>		Critically Endangered
Threecorner milkvetch	<i>Astragalus geyeri</i> var. <i>triquetrus</i>		Critically Endangered
White-margined beardtongue	<i>Penstemon albomarginatus</i>		
Yellow two-tone beardtongue	<i>Penstemon bicolor</i> ssp. <i>bicolor</i>		



desert conservation  
PROGRAM  
respect, protect and enjoy our desert!

## Conservation Strategy

- Current MSHCP Conservation Strategy
  - Funds species conservation on public land
  - After 10 years, not as effective or efficient as envisioned



- Amendment Conservation Strategy
  - Implements species monitoring and management
  - Focus on reserve units that support covered species
  - Reserve design process needed to identify MSHCP reserve units





- Current MSHCP is largely expenditure-based
  - Relies on funding federal agencies for conservation on federal lands
- Minimal on-site minimization to avoid direct take of covered species
- FWS has indicated that it cannot meet issuance criteria without more on-site minimization



- Zone A-Majority of vacant land near or adjacent to developed land
- Zone B-Characterized by natural land-cover types with varying levels of disturbance and development

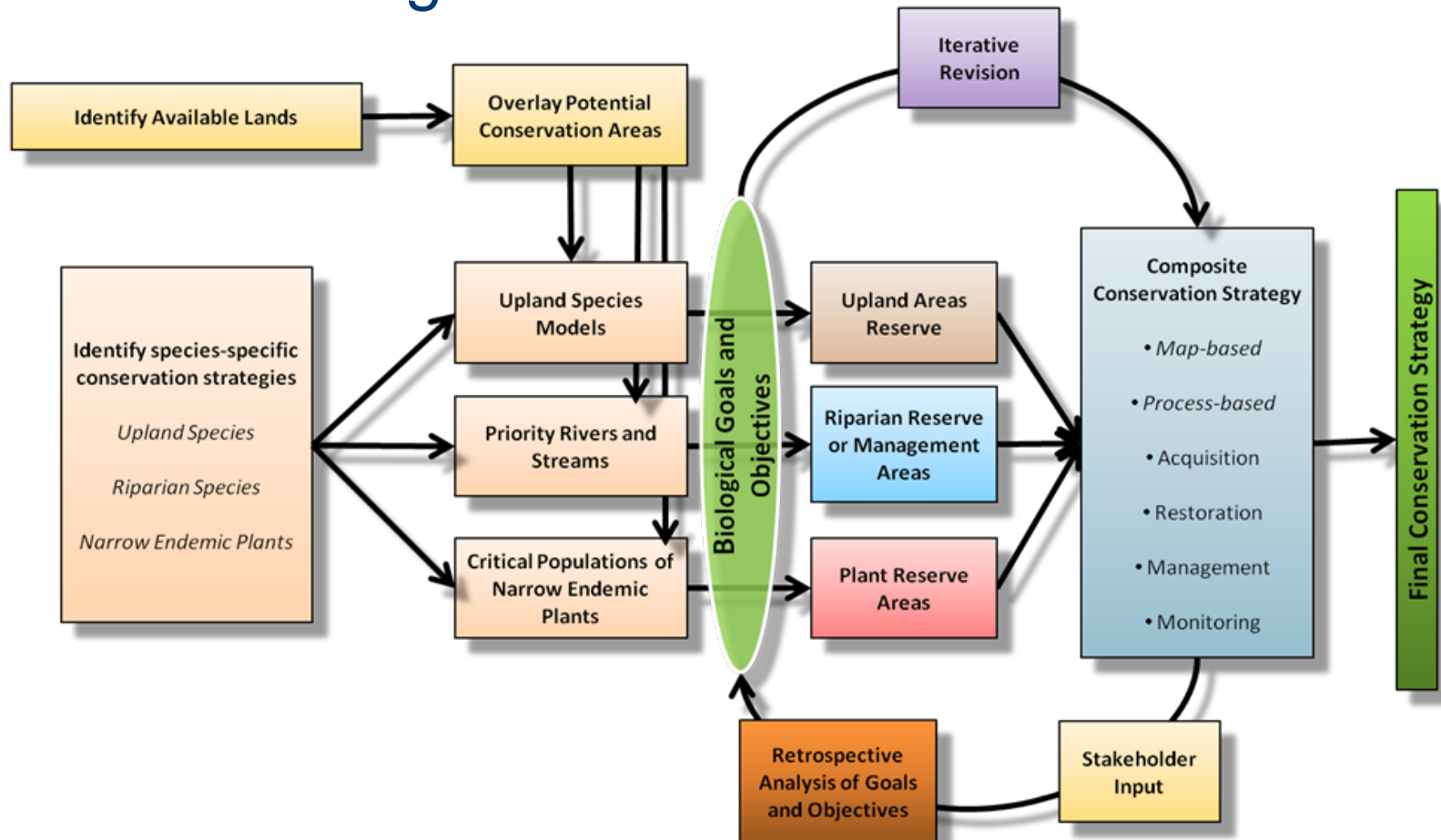




Proposed Avoidance and Minimization Measures	Zone A Urban Areas	Zone B Future Urban Areas
<i>Planning surveys</i>	No	No
<i>Pre-construction surveys</i>		
Burrowing owl	No	Yes
Desert tortoise	No	Yes
Riparian birds	No	If within 250 ft. of full bank width
Other species	No	No
Plants	No	If potential habitat
<i>Construction monitoring</i>		
Fencing	No	No
On-site monitor	No	No
Employee training program	Yes	Yes
Translocation/relocation	No	Yes
<i>On-site waste management</i>	No	Yes
<i>Urban-wildland interface measures</i>	No	Boundary edge only



## Reserve Design Process





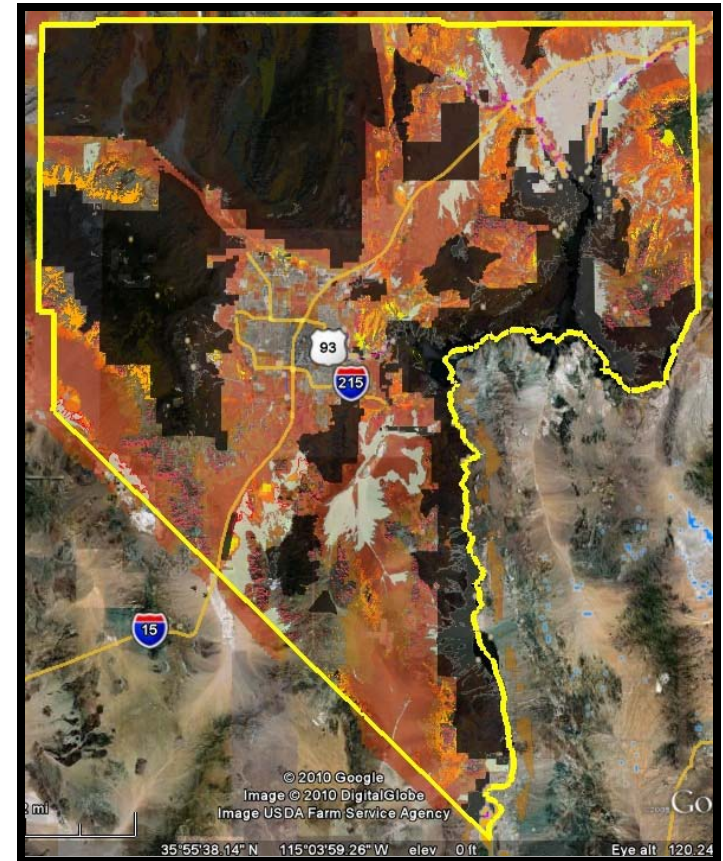
- Reserve Design Principles
  - Provide high-quality habitat for covered species
  - Be large enough to support sustainable populations of covered species
  - Provide connectivity to other conserved lands for covered species or serve as buffers
  - Provide diversity of environmental gradients
  - Provide opportunities for habitat enhancement/restoration
  - Minimize the length of edge and adjacent land uses that are detrimental to the reserve system



- Reserve System Proposal
  - Two approaches:
    - Upland - consists of transfer of BLM land to permittees for conservation
    - Riparian - consists of acquiring riparian habitat from willing sellers along Muddy and Virgin rivers



- Habitat of Covered Species
  - Modeled habitat distribution
    - Best available scientific data
    - Knowledge of the ecological and habitat associations
    - Best available GIS data
  - Known species occurrence data
    - Strongest evidence of habitat suitability





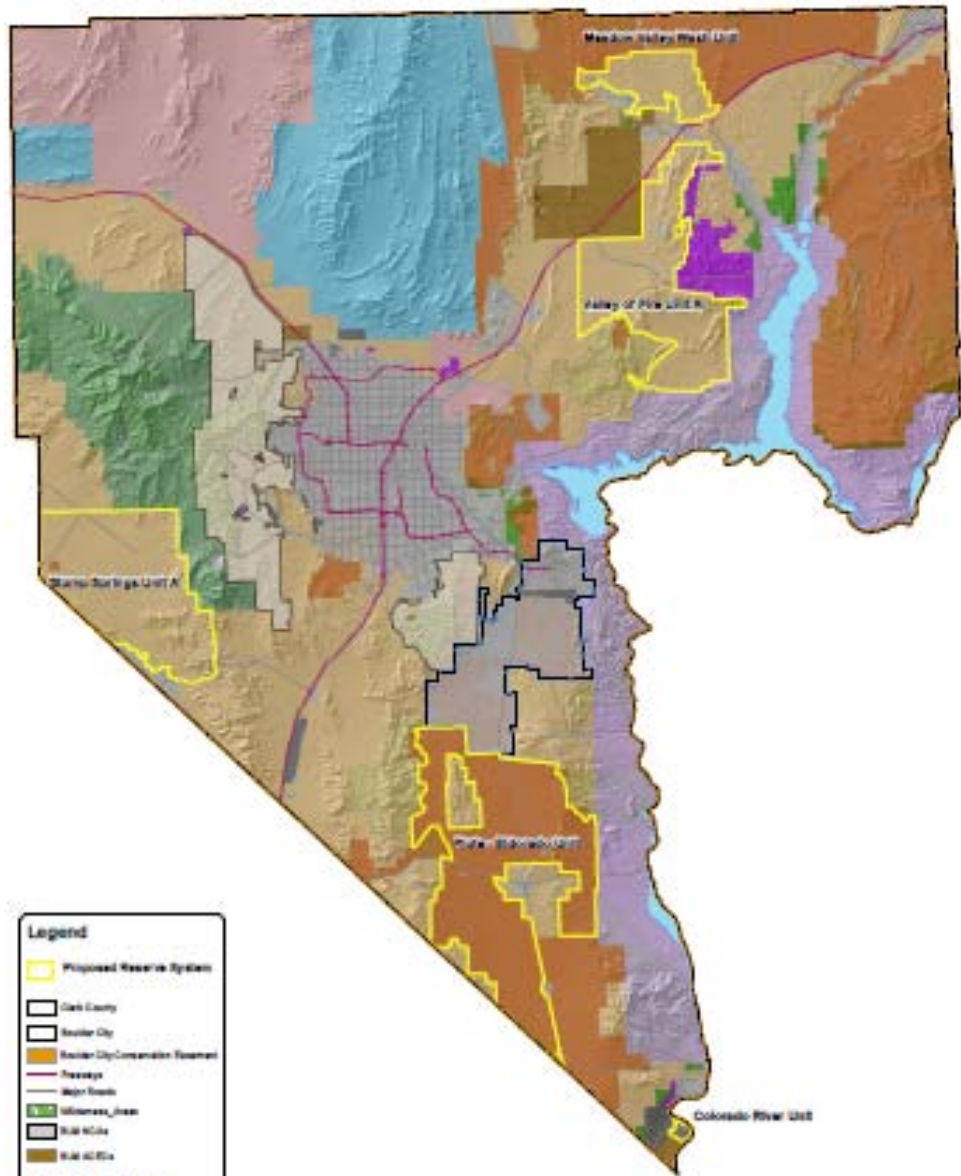
- **Select Reserve Units**
  - Based on the principles of reserve design
  - Select available lands first
  - Supplement with other lands if needed
  - Selected reserve unit areas between 100,000 and 300,000 acres





## Reserve alternatives

Reserve Unit	Alternative 1 (acres)	Alternative 2 (acres)	Alternative 3 (acres)	Alternative 4 (acres)	Alternative 5 (acres)
Valley of Fire	150,696	-	97,261	-	150,696
Stump Springs	-	155,060	64,336	-	155,060
Meadow Valley Wash	42,229	42,229	42,229	-	-
Paiute-El Dorado	-	-	-	230,000	-
Colorado River	1,387	1,387	1,387	1,387	1,387
<i>Total</i>	<i>194,312</i>	<i>198,677</i>	<i>205,214</i>	<i>231,387</i>	<i>307,143</i>



**Legend**

- Proposed Reserve System
- Clark County
- Boulder City
- Boulder City Conservation Easement
- Highways
- Main Roads
- Wilderness Areas
- BLM WCA
- BLM WCA

**Federal and State Lands**

- Bureau of Indian Affairs
- Bureau of Land Management
- Bureau of Reclamation
- Department of Defense
- Fish and Wildlife Service
- Forest Service
- National Park Service
- Nevada State
- Private




desert conservation  
PROGRAM






- February 2009 – First CAC meeting
- October 2009 – NEPA scoping
- September 2010 – Final CAC recommendations report
- Spring 2011 – Draft MSHCP/EIS
- Spring 2012 – Amended MSHCP and permit



PENASCO N. MEXICO



desert conservation  
PROGRAM  
respect, protect and enjoy our desert!

Questions?